



**REMOVAL OF ORIGINAL WATER HEATER AND REPLACEMENT WITH WIDNEY RSW10KL ROOM SEALED WATER HEATER.**

**Engineers Instructions**

The removal and fitting of the water heater must only be undertaken by competent persons as detailed in the appliances manuals. A list of Widney Certified installers is available on our website at [www.widney-leisure.co.uk](http://www.widney-leisure.co.uk)

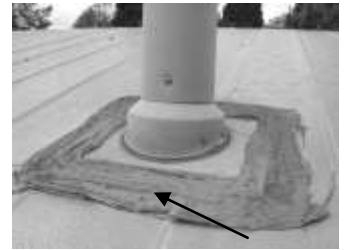
NOTE: The RSW10KL requires a fused spur electrical supply of 220v 50Hz

Removal of old water heater. – Refer to original boiler – water heater instructions for detailed removal instructions

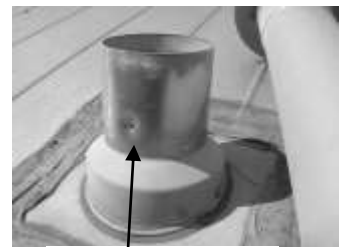
1. Isolate appliance from main gas, water and electrical supply (where applicable)
2. Disconnect main gas feed from water heater
3. Disconnect mains inlet and outlet water supply from water heater – note the water heater will contain water and therefore precautions should be made to capture any water left in the water heater.

Removal and replacement of water heater with RSW10KL room sealed water heater.

1. Before removing the water heater it is recommended that the outer flue terminal be disconnected from the water heater and the home. The connection of the flue terminal to the roof spigot may differ in each installation, however care should be taken not to disturb the roof plate sealing when removing the roof terminal.
2. Disconnect the water heater from the backboard by removing the fixing screws which are either located on the outside or behind the boiler / water heater outer cover – refer to the original boiler/ water heater instructions.
3. From the inside of the home pull down the flue pipe through the roof. In some instances the roof plate may be indented where the original terminal fixing was inserted. It is recommended that this indentation should be pulled out to allow insertion for easier removal of the existing pipe and fitting of the new flue and air pipe which requires an internal diameter of 90mm.



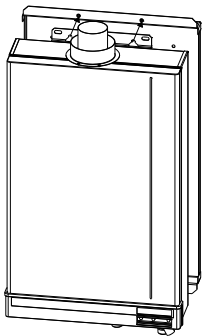
**Do Not** disturb this seal



Indentation

Replacement of Water heater.

1. After selecting the correct adaptor kit from the kit matrix the boiler adaptor plate should be fixed to the back of the replacement water heater.
2. From the outside of the home fit the new roof flue system through the roof plate ensuring that the outer fixing flange locates over the roof plate and is pushed downwards as far as possible. Do not at this stage secure the flue system.
3. Inside the home locate the flue system onto the water heater outlet and mark position of back plate on wall. Care should be taken to ensure correct alignment of water heater and flue system.
4. Remove back plate from heater and position against marks on wall. Mark and drill holes through back plate into wall. Ensure that the location of the holes aligns with studs in wall where applicable.
5. Fit the back plate to the wall



6. Install the water heater to the back plate. The flue system should be pushed vertically to allow fixing of the water heater to the wall then pulled down onto the water heater. Note the inner flue should be pulled completely downwards onto the water heater flue outlet spigot first then the outer flue located on the fixing spigot on top of the water heater. **WARNING.** If the inner flue system is not correctly located on the flue outlet spigot a leak will occur which will result in an error code being displayed on the water heater. Please see installation manual for error codes.

7. Clamp the flue system with clamping ring ensuring that the two seals in the clamping ring are correctly located and clamped to avoid leakage.
8. Fix the terminal to the roof plate (please do not use fixing longer than 12mm).
9. Connect services as detailed in the RSW10KL installers' instructions.



Locate



Push fully down

Ensure the flue pipe and seals are correctly located

